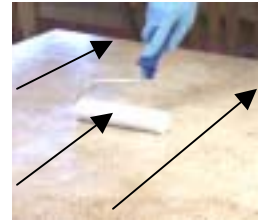




# Quick Start Guide for ...



## 1 Clean

using 3M's Painter's Tape for "Delicate Surfaces" because it prevents "bleed through"

## 2 Tape

## 3 Roll on Primer

in sections and "back roll" a few times using long, one way, end-to-end strokes

## 4 Sponge on all Minerals

in two foot sections, in the order they're numbered

## 5 Roll on thin Clear Topcoats

and "back roll" a few times using long, one-way, end-to-end strokes

## Dry Time Guide

1. Roll on Primer then wait . . . . . 6 hours
2. Sponge on all Minerals then wait . . . . . 2 hours
3. Roll on 1<sup>st</sup> Clear Topcoat then re-coat within . . . . 8 hours to 12 hours

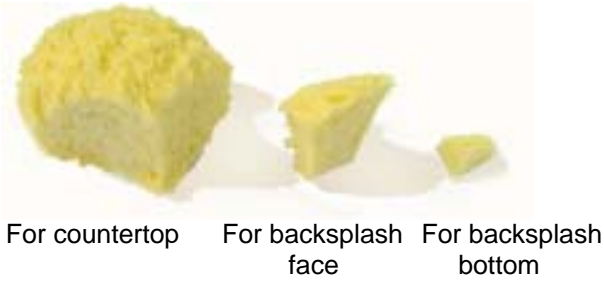
Note – it's very important to **apply your second topcoat at least eight hours – and not more than twelve hours** - after your first clear topcoat was applied.

4. Roll on 2<sup>nd</sup> Clear Topcoat then wait 24 hours before using countertops
5. After project is completed wait 72 hours before setting any small appliances back on
6. After project is completed wait 14 days before using soap to clean

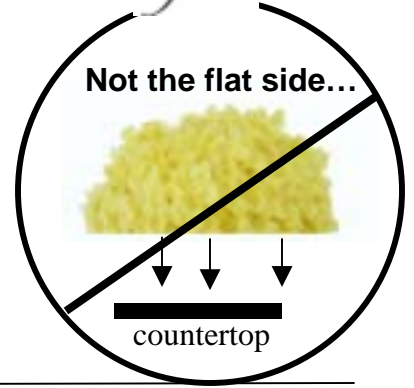
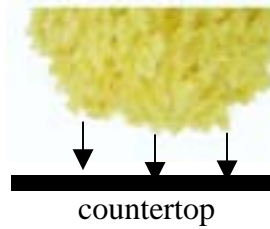


# GIANI™ 'Sponging Tips! ... *Giani*

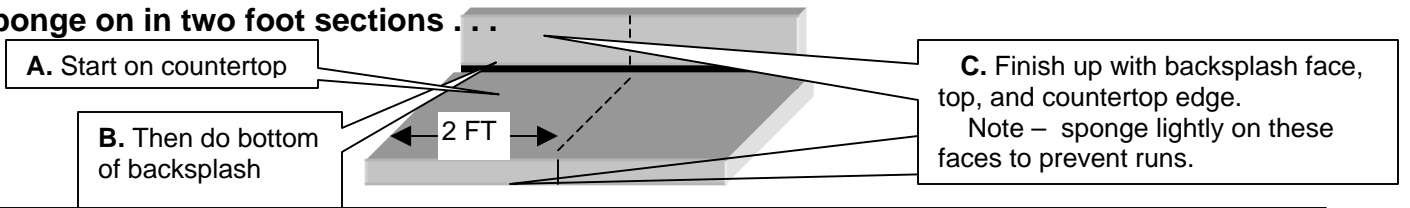
**1** "Cut the sponge into sections . . . and shake out any particles, rinse and wring out



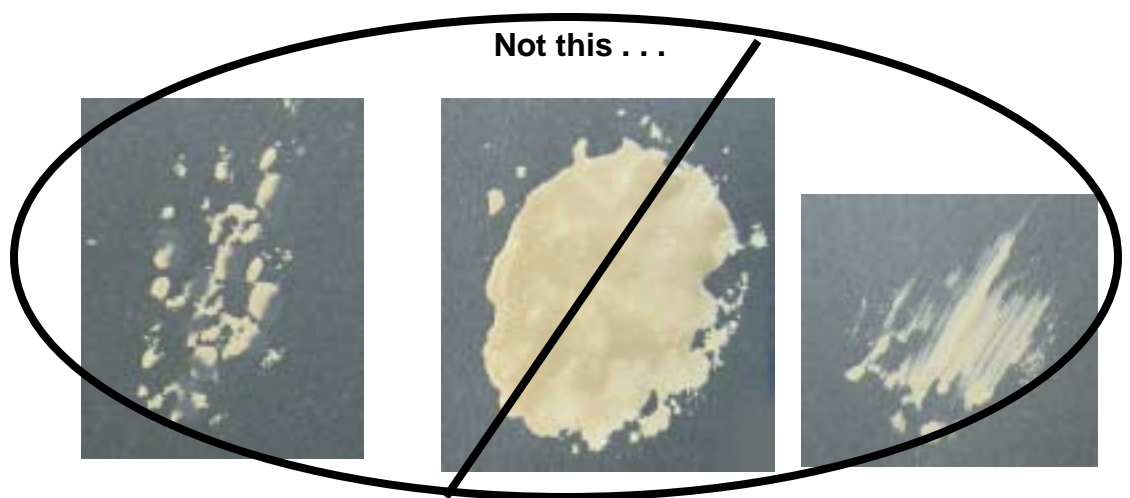
**2** "Blot with the 'spiny side . . .



**3** "Sponge on in two foot sections . . .

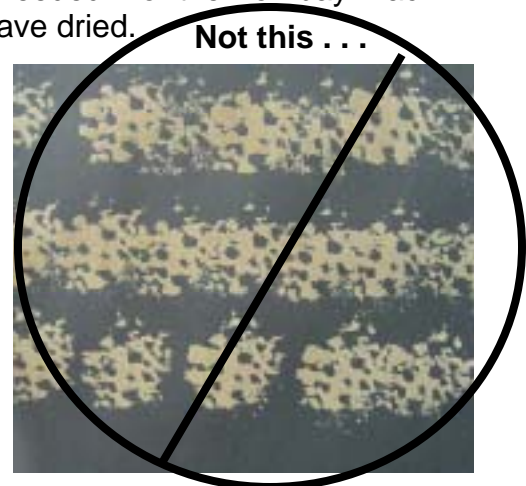
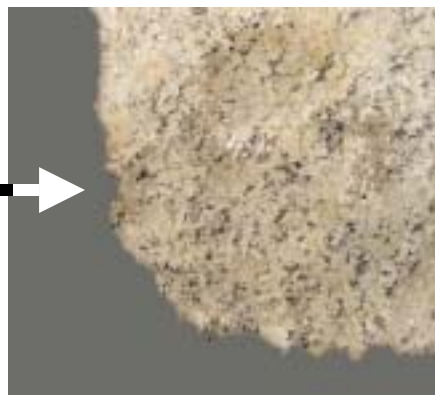


**4** "Blot like this . . .



"Apply like this . . .

**5** Apply Minerals in two foot sections. Apply all 3 Minerals in each section. Note: the final Mineral color goes a long way – use sparingly and work in. Add more as needed For the Bombay Black Kit – you may wish to add the "Bronze" after the other Minerals have dried.



Don't be timid – blend the Minerals together as you're dabbing! It takes multiple dabs!  
Note: you may go back in after the Minerals are dry and add more Black Primer or Black Onyx over your dried Minerals. Rinse and wring out your sponge and get fresh paper plates as needed.



## Detailed Instructions . . .

Congratulations! you're on your way to a fun and easy moisture resistant upgrade to your Formica®, laminate, Corian®, cultured marble, ceramic tile, butcher block or traditional granite countertops! GIANI is also great for upgrading your bathroom vanity, ceramic tile backsplash, and plastic shower walls too!

**Coverage:** This Kit will cover 35 square feet - or 16 running feet - of standard 24" wide countertop.

Additional items you may need - Thin plastic gloves, household degreaser, clear acrylic caulk, wood patch, twelve paper plates with a shiny coating (because they don't absorb so much of the paint), 3M Painter's Tape for Delicate Surfaces®, stiff artist's brush, and plastic primer if coating - plastic, acrylic, fiberglass or cultured marble – and a wood primer for bare wood.

Before you get started, prepare your countertops . . .



### Clean

Use your common household degreaser to remove any grease or residue.



### Remove any loose caulk

Replace any loose caulk at the top of your backsplash with a paintable caulk.

If you have a seam at the bottom of your backsplash that was filled with a silicone caulk, replace with a paintable caulk.



### Patch any deep nicks

If you have any deep nicks or seams, fill them with wood patch and sand smooth. Wipe off sanded material. Note - thin scratches do not need to be patched.



### Mask off with tape

Use 3M "Painter's Tape for Delicate Surfaces" because it resists "bleed through" - to mask off your sink, built-in cutting board, top of your dishwasher, and the wall above your backsplash.

## 1 Roll on IronCore™ Primer . . .



### Paint the Primer / Basecoat on your backsplash

**Shake and then stir** the #1 IronCore™ Primer / Basecoat **very well to disperse any settling** - and then pour a small amount into a clean roller tray.

Use your two inch foam brush and paint around your sink and any built-in cutting boards.

**Note – use narrow brush strokes to minimize brush marks.** Your roller will coat close up to the bottom of your backsplash. Next, paint around the top and bottom of your backsplash.



### Roll the Primer / Basecoat onto your counters

Roll the Primer / Basecoat onto your backsplash and countertop in approximately three foot sections.

After completing each section, lightly roll back over what you just rolled – using long one-way, over lapping, straight rows. Do this a few times. You do not have to re-wet the roller for this. This minimizes any lap lines. Now, repeat across your countertop.

**Important** - watch for runs and brush them out before they dry. 1 coat is required. **Let dry 6 hours.**

**Important-** use water to clean your roller and brush, because you'll need them for your Topcoat.

Your foam roller pad may have a black tint from the Primer – that's OK - as long as it rinses clean.

Only use the GIANI roller pad for optimal results.



### Practice Sponging

Once the Primer/Basecoat has dried for six hours - use the included black poster board to practice sponging on the Minerals

Follow the easy steps and then move right onto to your counters →

**Note – paper plates with the shiny coating are helpful because they don't absorb the Mineral paints.**

**"Note:** here's two new recipes for you that'll create our new GIANI™ Chocolate Brown™ Granite when used with your Sicilian Sand Kit™!

Enjoy! ...



### "Silky Chocolate Brown™ Granite -

1. IronCore Black™ Primer
2. Chocolate Brown™ Mineral
3. Inca Gold™ Mineral
4. White Limestone™ Mineral
5. Clear Topcoat

### Dark Chocolate Brown™ Granite –

1. IronCore Black™ Primer
2. Chocolate Brown™ Mineral
3. Brown Feldspar™ Mineral
4. Inca Gold™ Mineral –
5. Clear Topcoat

## 2 Sponge on GIANI™ Minerals . . .



### Cut sponge pieces

Cut your sponge into these three approximate widths : 1½ inches, 2½ inches, and a ½” piece.

**Important** – shake out any particles, then soak in water, and wring out – because the small amount of remaining moisture will prevent the sponge from absorbing too much of the GIANI™ Minerals.

Note - the GIANI™ sponge is specifically selected for its texture. Failure to use it may impart unsatisfactory results.

**Important** – the Minerals are applied in the order they're numbered because they'll achieve more depth from various shades.

Use all three Minerals in roughly two foot sections before moving on to the next section.

The final Mineral color is light – so use sparingly. Work in – and more as needed.

You may go back in later - while they're still wet - or dry, and add more color – or colors - as desired.

You may even go back in and add small flecks of “black” by using the Primer with the sponge tips.



### Sponge the Minerals on in 2' sections

Shake the Step #2 Mineral and pour small amount onto a paper plate. Next, holding the flat, cut edge of your larger sponge, blot its **textured side** into plate.

Dab off the excess paint onto a separate paper plate. Then – and here's where the fun comes in - stamp the coated side of the sponge onto your top with **up-and-down movements**.

There's no 'right or 'wrong granite – it's natural - so just dab it on randomly!

**Important** – do not swipe the sponge sideways. Only stamp it up and down – Press firm enough so that much of sponge's face makes contact and **makes an impression like Swiss Cheese**.

**Important** – the spiny texture of your sponge will prevent the Minerals from completely covering the black Base Coat. Each additional Mineral will cover more.

Next, sponge on your Step #3 and Step #4 Minerals in the same two foot section you're working in.

**\*\*Note, on Bombay Black™ Kits, you may wish to only use a small bit of your #4 Mineral Bronze as an accent**

Use your big sponge on your backsplash face, and the little sponge at its bottom - or - use a stiff artist's brush -



### Dab Minerals on at backsplash bottom

Sponge very lightly on your backsplash and edges to prevent runs. If you see a run, dab it out before they dry.

**Repeat process across entire counter.** Rinse and wring out your sponge and replace your paper plates as needed.

Every once in a while - pause and step back. You may always go back in.

**Add veins** - once it is dry, you may add further depth with light accents or veins -

Use the corner tip of your clean sponge with a tiny amount of Mineral to very lightly tap on curving veins or accents. Note – when adding veins - it's best to 'soften their addition by adding at least two Minerals. Color on top of color - builds depth.

### How to add your own color!...

After the primer dries, sponge on your choice of 100% acrylic, water-based colors - let dry 48 hours -and then sponge on the GIANI™ Minerals –

or - sponge on GIANI™ Minerals, let them dry for 48 hours and then apply your colors .

**Practice on your poster board first!** **GIANI™ will not fill in tile grout lines.**

You may apply GIANI™ over the grout and be done - or use an artist brush and re-coat the grout with a solid color such as a GIANI Mineral –before you apply the Clear Topcoat.

## 3 Roll on Clear Topcoat . . .



### Let Minerals dry 2 hours - roll on 1<sup>st</sup> Topcoat

Let your GIANI™ granite dry for **two hours**. **Important** – don't apply Topcoat until you're satisfied with your countertop look.

Feel for any high tips or particles on your countertop - and lightly smooth them down with a 320 or higher – very fine grit sandpaper. Wipe off.

Lightly shake your #5 Clear Topcoat and pour a small amount into a clean roller tray. Trim in around sink, and backsplash with foam brush.

Roll on a thin Topcoat in maximum 6' sections. Slowly and lightly - roll back over what you just rolled- using long, one-way, overlapping rows, running the entire width or length of your section. You should do this a few times.

This will minimize any lap lines. You do not have to re-wet the roller for this. Work quickly and repeat this across counters.

Again- check for any high tips or particulate and sand them smooth.

**Apply your second topcoat at least 8 hours - and not more than 12 hours after your first topcoat.**

Apply the same as the first. Two Topcoats are required. Do not apply more than two -because a third coat may become cloudy.

Let 2<sup>nd</sup> topcoat dry for at least 1 hour



### Wait 24 hrs. – caulk sink

before scoring and removing any tape. After 24 hours - apply clear acrylic caulk around your sink.

Wait 72 hours before placing any small appliances on it. For first 14 days - avoid incidental food contact – use a soft cloth and warm water to clean spills – and make sure standing water is removed.

Caution: Do not take internally. Avoid contact with eyes and skin. Use with adequate ventilation. KEEP OUT OF REACH OF CHILDREN. Apply 60F– 90F. **Clean only with soft cloth, mild Anti-bacterial soap and warm water. Do not use cleaners, scrubbers or polishes.** Not for cutting, chopping, food prep. Do not set hot pans on GIANI™. 800-650-5699 [GIANIgranite.com](http://GIANIgranite.com)